

Information Technology and Behavioral Health: The National Perspective

Presented by:

Kathleen M. Reynolds LMSW ACSW

Sharing Information is the Standard

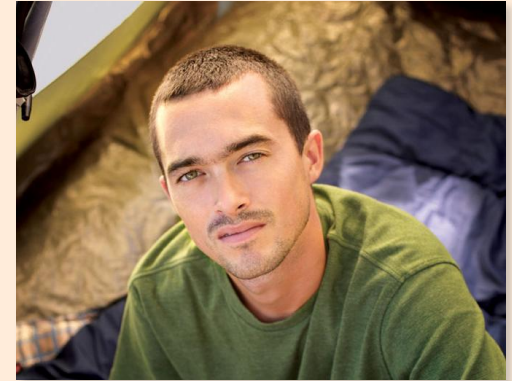


- > Health Information Exchanges RULE!
- > Integration will only be successful if we can share information
- > More than a CCD needs to be available

Addressing Confidentiality



- > Common Barrier
- > If not addressed, promotes stigma
- > Information can be shared for case coordination for HIPAA
- States are addressing the issues through laws to allow sharing – Ohio, Washington
- Great SAMHSA resources for HIPAA and 42 CFR



Using Data for Population Based Interventions

Cost Rank	Treatment	Total Charges	No of members	Average Charges per Member
1	Community Support Services/15 min	\$2,890,038	218	\$13,257
2	Community Support Services /day	\$1,916,375	181	\$10,588
3	Personal care per diem	\$1,394,614	123	\$11,338
4	Habilitation, prevocational/15 min	\$758,157	104	\$7,290
5	Supported employment/15 min	\$713,680	154	\$4,634
6	Inpatient room and board	\$699,602	90	\$7,773
7	Targeted case management/15 min	\$557,154	689	\$1,009
8	Inpatient- ancillaries	\$494,577	81	\$6,878
9	Case management/ 15 min	\$438,577	470	\$1,052
10	Emergency room	\$356,478	247	\$1,776
11	Psych medication management	\$356,478	1,086	\$328
12	Inpatient-facility charges	\$288,479	52	\$5,548
13	Labs	\$287,935	437	\$659
14	ACT program	\$286,773	115	\$2,494
15	Medical supplies	\$241,812	156	\$1,550
16	Family therapy	\$221,136	181	\$1,222
24	Office visits – primary care	\$154,773	616	\$215
29	Surgery	\$105,085	98	\$1,072
36	Ambulance	\$54,581	67	\$815

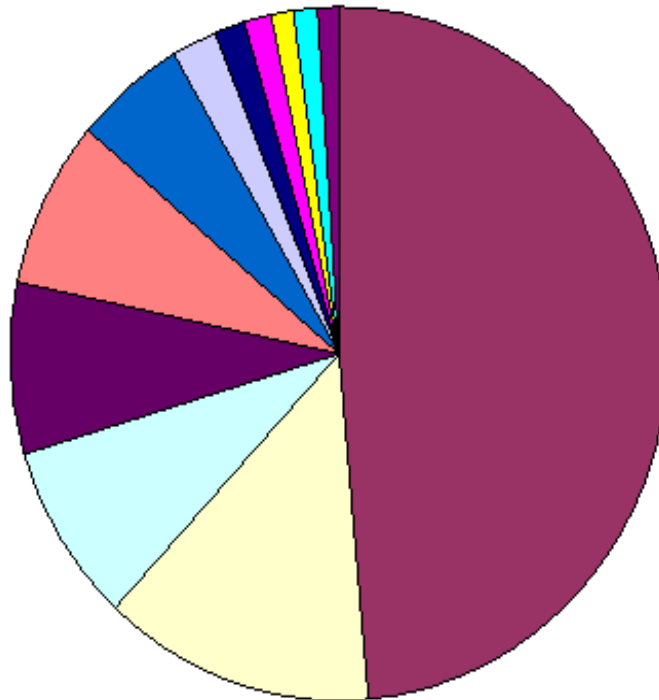
Table of top cost by diagnosis

January-March, 2006

Cost Rank	Primary Diagnosis	Total Charges	No of Members	Average Charges Per Member
1	Schizophrenia and Affective Psychosis	\$6,167,527	1,102	\$5,597
2	Depression/Anxiety/Neuroses	\$1,710,759	347	\$4,930
3	Moderate Mental Retardation	\$1,040,669	112	\$9,292
4	Severe Mental Retardation	\$1,032,094	74	\$13,947
5	Profound Mental Retardation	\$982,760	39	\$25,199
6	Mild Mental Retardation	\$709,344	131	\$5,415
7	Alcohol and Drug Abuse	\$283,077	177	\$1,599
8	Pregnancy	\$183,653	39	\$4,709
9	Congestive heart Failure	\$168,130	7	\$24,019
10	Chest Pain	\$161,260	65	\$2,481
11	All Fractures and Dislocations	\$137,901	19	\$7,258
12	Diabetes Mellitus	\$134,161	42	\$3,194

Cost Data by Primary Diagnosis

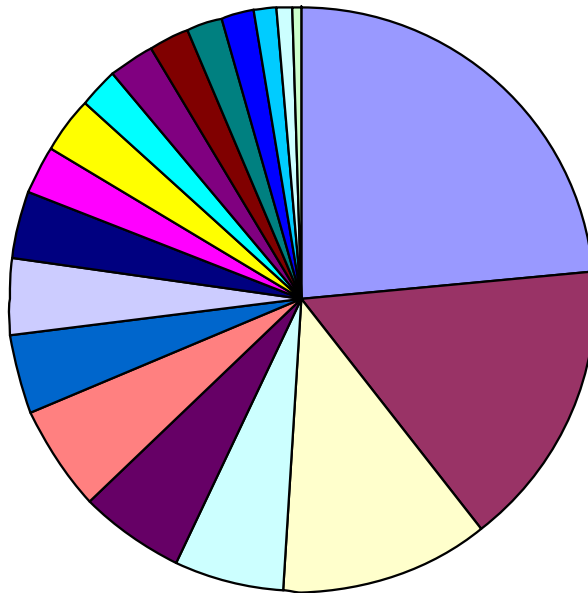
Total Charges By Primary Diagnosis Jan-March, 2006



- Schizophrenia and Affective Psychosis
- Depression/Anxiety/Neuroses
- Moderate Mental Retardation
- Severe Mental Retardation
- Profound Mental Retardation
- Mild Mental Retardation
- Alcohol and Drug Abuse
- Pregnancy
- Congestive heart Failure
- Chest Pain

Cost By Service Type

Top Cost by Treatment Type January-March, 2006



- Community Support Services/15 min
- Community Support Services /day
- Personal care per diem
- Habilitation, prevocational/15 min
- Supported employment/15 min
- Inpatient room and board
- Targeted case management/15 min
- Inpatient- ancillaries
- Case management/ 15 min

Using Data for Individual Interventions

High Utilizer Report



3 consumers with an average cost of \$272,652 each

Drill down: Consumer with brittle diabetes and personality disorder – frequent ER and inpatient

4 consumers with average cost of \$236,434 each

Drill down: Consumer with SUD without motivation & personality disorder; multiple complex medical conditions

4 Consumers with average cost of \$85,867 each

Drill down: Consumer with SUD– frequent detox ;lack of community services

Case #1



Service Primary Diagnosis	Diagnosis Description	Charges
2761	HYPOSMOLALITY AND/OR HYPONATREMIA	\$4,994
29500	SIMPLE TYPE SCHIZOPHRENIA, UNSPECIFIED STATE	\$269
29570	SCHIZO-AFFECTIVE TYPE SCHIZOPHRENIA, UNSPECIFIED STATE	\$15,650
29590	UNSPECIFIED TYPE SCHIZOPHRENIA, UNSPECIFIED STATE	\$300
29591	UNSPECIFIED TYPE SCHIZOPHRENIA, SUBCHRONIC STATE	\$415
55221	INCISIONAL HERNIA WITH OBSTRUCTION	\$37,880
55321	INCISIONAL HERNIA WITHOUT MENTION OF OBSTRUCTION OR GANGRENE	\$701
5538	HERNIA OF OTHER SPECIFIED SITES WITHOUT MENTION OF *	\$182
56081	INTESTINAL OR PERITONEAL ADHESIONS WITH OBSTRUCTION	\$10,532
5609	UNSPECIFIED INTESTINAL OBSTRUCTION	\$23,992
56400	UNSPECIFIED CONSTIPATION	\$3,987
5672	OTHER SUPPURATIVE PERITONITIS	\$3,137
5770	ACUTE PANCREATITIS	\$40,280
5771	CHRONIC PANCREATITIS	\$32
5789	HEMORRHAGE OF GASTROINTESTINAL TRACT, UNSPECIFIED	\$29
6101	DIFFUSE CYSTIC MASTOPATHY	\$83

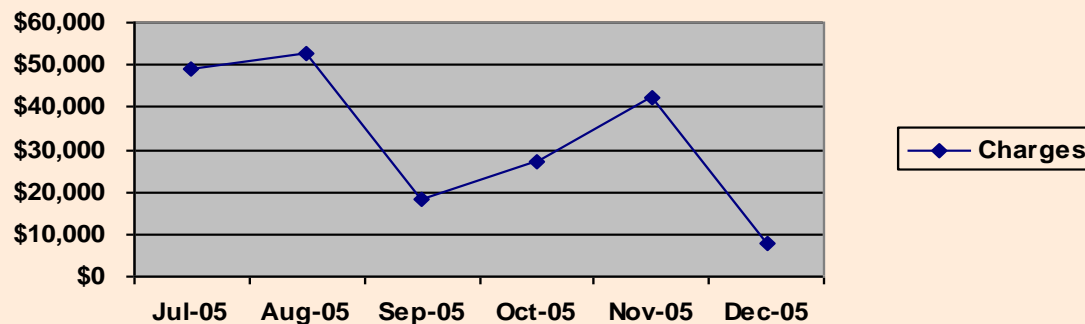
Case 1: Continued

6256	STRESS INCONTINENCE, FEMALE	\$3,016
71945	PAIN IN JOINT INVOLVING PELVIC REGION AND THIGH	\$165
78002	TRANSIENT ALTERATION OF AWARENESS	\$237
78009	ALTERATION OF CONSCIOUSNESS, OTHER	\$462
78099	OTHER GENERAL SYMPTOMS	\$375
7840	HEADACHE	\$201
78605	SHORTNESS OF BREATH - SOB	\$427
78701	NAUSEA WITH VOMITING	\$636
78702	NAUSEA ALONE	\$61
78703	VOMITING ALONE	\$61
78833	MIXED INCONTINENCE	\$120
78900	ABDOMINAL PAIN, UNSPECIFIED SITE	\$556
78902	ABDOMINAL PAIN LEFT UPPER QUADRANT	\$90
78907	ABDOMINAL PAIN GENERALIZED	\$307
78909	ABDOMINAL PAIN OTHER SPECIFIED SITE	\$350
7895	ASCITES	\$447
79431	NONSPECIFIC ABNORMAL ELECTROCARDIOGRAM (ECG) (EKG)	\$75
8792	OPEN WOUND OF ABDOMINAL WALL, ANTERIOR, WITHOUT MENTION OF COMPLICATION	\$604
9779	POISONING BY UNSPECIFIED DRUG OR MEDICINAL SUBSTANCE	\$75
9952	UNSPECIFIED ADVERSE EFFECT OF DRUG, MEDICINAL AND *	\$137
9974	GASTROINTESTINAL COMPLICATIONS, NOT ELSEWHERE CLASSIFIED	\$46,674
V053	NEED FOR OTHER PROPHYLACTIC VACCINATION - VIRAL HEPATITIS	\$80



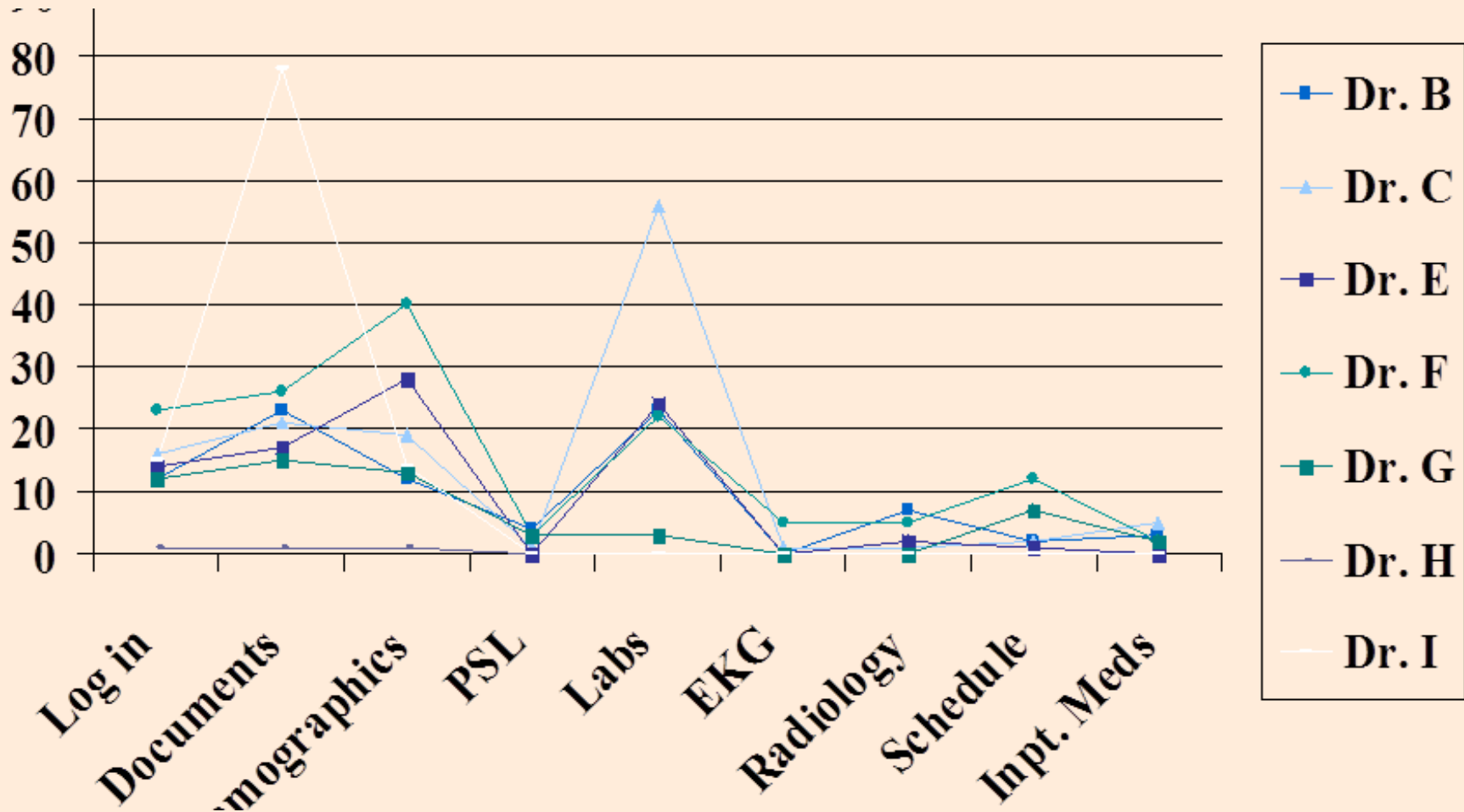
Gender	indicator of CSTS families – MI DD YF	ER Visits	Total Charges for 6 consecutive months
F	MI	9	\$197,619

Timeframe	Jul2005	Aug2005	Sep2005	Oct2005	Nov2005	Dec2005
Charges	\$49,010	\$52,632	\$18,050	\$27,376	\$42,493	\$8,058



Psychiatric Access to the Primary Care Record

Psychiatrist Access to PC Data



Contact Information:
kathyr@thenationalcouncil.org
734.476.9879